

## Sickle-cell disease

David C Rees, Thomas N Williams, Mark T Gladwin

*Lancet* 2010; 376: 2018–31

Published Online

December 4, 2010

DOI:10.1016/S0140-

6736(10)61029-X

Department of Paediatric Haematology, King's College Hospital NHS Foundation Trust, King's College London, London, UK (D C Rees FRCP); Kenya Medical Research Institute Centre for Geographic Medicine Research-Coast, Kilifi, Kenya (T N Williams PhD); Nuffield Department of Clinical Medicine, University of Oxford, Oxford, UK (T N Williams); and Pulmonary, Allergy and Critical Care Medicine and Vascular Medicine Institute, University of Pittsburgh, Pittsburgh, PA, USA (Prof M T Gladwin MD)

Correspondence to:

Dr David C Rees, Department of Paediatric Haematology, King's College Hospital NHS Foundation Trust, Denmark Hill, King's College London, London SE5 9RS, UK  
david.rees@kcl.ac.uk

Sickle-cell disease is one of the most common severe monogenic disorders in the world. Haemoglobin polymerisation, leading to erythrocyte rigidity and vaso-occlusion, is central to the pathophysiology of this disease, although the importance of chronic anaemia, haemolysis, and vasculopathy has been established. Clinical management is basic and few treatments have a robust evidence base. One of the main problems of sickle-cell disease in children is the development of cerebrovascular disease and cognitive impairment, and the role of blood transfusion and hydroxycarbamide for prevention of these complications is starting to be understood. Recurrent episodes of vaso-occlusion and inflammation result in progressive damage to most organs, including the brain, kidneys, lungs, bones, and cardiovascular system, which becomes apparent with increasing age. Most people with sickle-cell disease live in Africa, where little is known about this disease; however, we do know that the disorder follows a more severe clinical course in Africa than for the rest of the world and that infectious diseases have a role in causing this increased severity of sickle-cell disease. More work is needed to develop effective treatments that specifically target pathophysiological changes and clinical complications of sickle-cell disease.

### Introduction

Sickle-cell disease is a multisystem disease, associated with episodes of acute illness and progressive organ damage, and is one of the most common severe monogenic disorders worldwide.<sup>1</sup> Herrick<sup>2</sup> first described the characteristic sickle-shaped erythrocytes in 1910 (figure 1), and understanding has gradually increased since then (table 1). Pauling and colleagues<sup>3</sup> identified electrophoretic abnormalities in sickle haemoglobin (HbS) and coined the term “molecular disease” in 1949. The haemoglobin biophysics and genetics underlying the disease have been extensively studied and have helped the understanding of other molecular diseases. However, clinical management of sickle-cell disease is still basic and, although some evidence lends support to the use of blood transfusion and hydroxycarbamide in some circumstances, no drugs have been developed that specifically target the pathophysiology of this disease.

### Classification

The term sickle-cell disease is used to refer to all the different genotypes that cause the characteristic clinical syndrome, whereas sickle-cell anaemia, the most common form of sickle-cell disease, refers specifically to homozygosity for the  $\beta^s$  allele. In this Seminar, we mostly discuss sickle-cell anaemia, because there is little evidence for the management of other types of sickle-cell disease. In populations of African ethnic origin, sickle-cell anaemia typically accounts for 70% of cases of sickle-cell disease, with most of the remainder having haemoglobin SC disease (HbSC disease) owing to the co-inheritance of the  $\beta^s$  and  $\beta^c$  alleles.<sup>13</sup> The third major type of sickle-cell disease occurs when  $\beta^s$  is inherited with a  $\beta$ -thalassaemia allele, causing HbS/ $\beta$ -thalassaemia; this is a variable disorder dependent on the type of the  $\beta$ -thalassaemia mutation.<sup>14</sup> Apart from the many different types of HbS/ $\beta$ -thalassaemia, ten further genotypes that cause sickle-cell disease have been described, although most are rare (table 2).

### Pathophysiology

HbS is caused by a mutation in the  $\beta$ -globin gene in which the 17th nucleotide is changed from thymine to adenine and the sixth aminoacid in the  $\beta$ -globin chain becomes valine instead of glutamic acid.<sup>21</sup> This mutation produces a hydrophobic motif in the deoxygenated HbS tetramer that results in binding between  $\beta 1$  and  $\beta 2$  chains of two haemoglobin molecules. This crystallisation produces a polymer nucleus, which grows and fills the erythrocyte, disrupting its architecture and flexibility and promoting cellular dehydration, with physical and oxidative cellular stress.<sup>22</sup> The rate and extent of HbS polymerisation is proportional to the extent and duration of haemoglobin deoxygenation, the intracellular HbS concentration (to about the 34th power), and the presence of fetal haemoglobin in the erythrocyte, which effectively reduces the concentration of HbS.<sup>21,23</sup> The main determinant of disease severity is the rate and extent of HbS polymerisation, which is exemplified by co-inheritance of genetic factors that modulate the intracellular HbS or fetal haemoglobin concentration, such as the protective effects of co-inherited  $\alpha$ -thalassaemia or hereditary persistence of fetal haemoglobin. Similarly, therapeutic inhibition of the

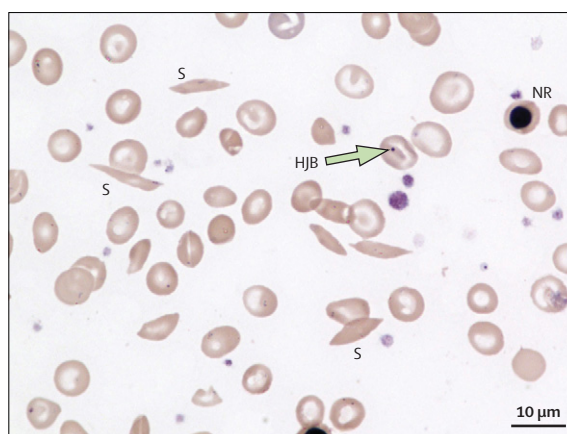
### Search strategy and selection criteria

We searched Medline and EmBase from 1960 to May, 2010, with the search term “sickle” in combination with the search terms “stroke”, “pain”, “infection”, “malaria”, “chest”, “kidney”, “vaso-occlusion”, “haemolysis”, “nitric oxide”, “epidemiology”, “screening”, “diagnosis”, “hydroxyurea”, “hydroxycarbamide”, “blood transfusion”, “iron chelation”, “gene therapy”, “transplantation”, “neurology”, “vasculopathy”, “pulmonary hypertension”, “cardiac”, and “treatment”. We mostly selected publications from the past 5 years, but did not exclude commonly referenced and important older publications. Review articles and books are cited to provide readers with more additional details and references. Our reference list was modified on the basis of comments from peer reviewers.

cation transport channels prevents erythrocyte dehydration and effectively reduces HbS concentration, and reduces haemolysis; hydroxycarbamide increases fetal haemoglobin concentrations, reduces haemolysis, and prevents acute vaso-occlusion.<sup>21</sup> These manifestations are driven by two major pathophysiological processes: vaso-occlusion with ischaemia-reperfusion injury and haemolytic anaemia (figure 2).

Acute vaso-occlusive pain is thought to be caused by entrapment of erythrocytes and leucocytes in the microcirculation, causing vascular obstruction and tissue ischaemia. Although this process requires HbS polymerisation, the event that triggers the vascular obstruction by sickle erythrocytes is often inflammatory. As indicated in the microcirculation of transgenic mice expressing HbS, cycles of experimental hypoxia or treatment with inflammatory drugs increase endothelial-leucocyte-erythrocyte adhesive interactions in the postcapillary venules and start vascular occlusion.<sup>24–27</sup> In addition to inflammatory triggers, precapillary obstruction by rigid, deformed erythrocytes with high HbS polymer content also contributes to microvascular vaso-occlusion. Vascular occlusion is the result of a dynamic interaction between erythrocytes and the vascular endothelium, resulting in episodic microvascular occlusion and ischaemia, followed by restoration of blood flow, which further promotes tissue injury mediated by reperfusion. These cycles of ischaemia and reperfusion cause oxidant stress, with activation of vascular oxidases<sup>28</sup> and inflammatory stress, increasing expression of endothelial cell-adhesion molecules, increasing synthesis of inflammatory cytokines, and can cause leucocytosis.<sup>24,26,29</sup> Bone marrow infarction leading to fat embolisation might also contribute to vascular occlusion, particularly in the lungs, where it causes acute chest syndrome.<sup>30</sup>

The second pathophysiological process in sickle-cell disease is haemolytic anaemia, which is also driven by HbS polymerisation. Haemolysis has long been known to cause anaemia, fatigue, and cholelithiasis, but there is now evidence that it contributes to the development of progressive vasculopathy. As patients with sickle-cell disease age, they are at risk of vasculopathy, characterised by systemic and pulmonary hypertension, endothelial dysfunction, and proliferative changes in the intima and smooth muscle of blood vessels.<sup>31–34</sup> Data from epidemiological studies suggest that several complications are associated with increased rates of haemolysis; cholelithiasis, cutaneous leg ulceration, priapism, and pulmonary hypertension are associated with low steady-state haemoglobin concentrations and an increased rate of intravascular haemolysis.<sup>33,35</sup> An association between the development of pulmonary hypertension and the intensity of haemolytic anaemia was noted in three prospective screening studies of adults with sickle-cell disease<sup>33,36,37</sup> and in paediatric studies.<sup>38,39</sup> Pulmonary hypertension has also been reported in other forms of chronic hereditary and acquired haemolytic anaemia.<sup>40</sup>



**Figure 1: Peripheral blood smear of a patient with sickle-cell anaemia**  
This blood film shows irreversibly sickled cells (S), a nucleated red blood cell (NR), and a Howell-Jolly Body (HJB); these last two features are mainly associated with hyposplenism (stained with May-Grunwald-Giemsa).

Discovery	Importance
1910 Sickled erythrocytes in Grenadan dental student <sup>2</sup>	First description of disease linked to abnormal erythrocytes
1924 Haemolysis in sickle-cell disease <sup>3</sup>	Explanation for anaemia, jaundice, and cholelithiasis
1924 Vaso-occlusion as cause of some pathological features <sup>4</sup>	Explanation for ischaemic tissue damage
1948 Abnormal electrophoretic mobility of sickle haemoglobin <sup>5</sup>	Identified pathophysiology to have a molecular basis
1948 No symptoms in infants noted <sup>6</sup>	Beneficial effects of high concentrations of fetal haemoglobin identified
1951 Characteristics of polymerisation of deoxygenated HbS <sup>7</sup>	Primary molecular mechanism identified
1980s Value of penicillin in young children with sickle-cell anaemia <sup>8,9</sup>	Reduced mortality, role of neonatal screening
1984 Bone marrow transplant in child with sickle-cell anaemia and leukaemia <sup>10</sup>	Identified potential cure
1995 Efficacy of hydroxycarbamide <sup>11</sup>	Only disease-modifying drug identified
1998 Reduced stroke incidence in children with abnormal transcranial dopplers who were given blood transfusion <sup>12</sup>	Primary stroke prevention with fall in stroke occurrence

**Table 1: Important discoveries in the pathological and clinical features of sickle-cell disease in chronological order**

Therefore, patients with low haemoglobin concentrations and high haemolytic rates seem to form a subphenotype of patients who are more likely to develop vasculopathy than are those with higher haemoglobin concentrations who seem more prone to episodes of acute pain and, possibly, acute chest syndrome.<sup>35</sup> Although vaso-occlusion is important in all patients, the role of haemolysis as a pathophysiological mechanism in sickle-cell disease is more controversial and is the focus of much research.

An important disease mechanism involves the release of haemoglobin into the circulation during intravascular

Characteristics	
<b>Severe sickle-cell disease</b>	
HbS/S ( $\beta 6\text{Glu}>\text{Val}/\beta 6\text{Glu}>\text{Val}$ ); sickle-cell anaemia	The most common form of sickle-cell disease
HbS/ $\beta^0$ thalassaemia	Most prevalent in the eastern Mediterranean region and India <sup>14</sup>
Severe HbS/ $\beta^+$ thalassaemia	Most prevalent in the eastern Mediterranean region and India; 1–5% HbA present <sup>14</sup>
HbS/OArab ( $\beta 6\text{Glu}>\text{Val}/\beta 121\text{Glu}>\text{Lys}$ )	Reported in north Africa, the Middle East, and the Balkans; relatively rare <sup>14</sup>
HbS/D Punjab ( $\beta 6\text{Glu}>\text{Val}/\beta 121\text{Glu}>\text{Gln}$ )	Predominant in northern India but occurs worldwide <sup>14</sup>
HbS/C Harlem ( $\beta 6\text{Glu}>\text{Val}/\beta 6\text{Glu}>\text{Val}/\beta, \beta 73\text{Asp}>\text{Asn}$ )	Electrophoretically resembles HbSC, but clinically severe; double mutation in $\beta$ -globin gene; very rare <sup>15</sup>
HbC/S Antilles ( $\beta 6\text{Glu}>\text{Lys}/\beta 6\text{Glu}>\text{Val}, \beta 23\text{Val}>\text{Ile}$ )	Double mutation in $\beta$ -globin gene results in severe sickle-cell disease when co-inherited with HbC; very rare <sup>16</sup>
HbS/Quebec-CHORI ( $\beta 6\text{Glu}>\text{Val}/\beta 87\text{Thr}>\text{Ile}$ )	Two cases described; resembles sickle-cell trait with standard analytical techniques <sup>17</sup>
<b>Moderate sickle-cell disease</b>	
HbS/C ( $\beta 6\text{Glu}>\text{Val}/\beta 6\text{Glu}>\text{Lys}$ )	25–30% cases of sickle-cell disease in populations of African origin <sup>13</sup>
Moderate HbS/ $\beta^+$ thalassaemia	Most cases in the eastern Mediterranean region; 6–15% HbA present <sup>14</sup>
HbA/S Oman ( $\beta^+/\beta 6\text{Glu}>\text{Val}, \beta 121\text{Glu}>\text{Lys}$ )	Dominant form of sickle-cell disease caused by double mutation in $\beta$ -globin gene; very rare <sup>18</sup>
<b>Mild sickle-cell disease</b>	
Mild HbS/ $\beta^{++}$ thalassaemia	Mostly in populations of African origin; 16–30% HbA present <sup>14</sup>
HbS/E ( $\beta 6\text{Glu}>\text{Val}/\beta 26\text{Glu}>\text{Lys}$ )	HbE predominates in southeast Asia and so HbSE uncommon, although frequency is increasing with population migration <sup>19</sup>
HbA/Jamaica Plain ( $\beta^+/\beta 6\text{Glu}>\text{Val}, \beta 68\text{Leu}/\text{Phe}$ )	Dominant form of sickle-cell disease; double mutation results in Hb with low oxygen affinity; one case described <sup>20</sup>
<b>Very mild sickle-cell disease</b>	
HbS/HPFH	Group of disorders caused by large deletions of the $\beta$ -globin gene complex; typically 30% fetal haemoglobin <sup>14</sup>
HbS/other Hb variants	HbS is co-inherited with many other Hb variants, and symptoms develop only in extreme hypoxia

Genotypes that have been reported to cause sickle-cell disease are listed. All include at least one copy of the  $\beta^S$  allele, in combination with one or more mutations in the  $\beta$ -globin gene. HbS=sickle haemoglobin. HbA=haemoglobin variant A. HbE=haemoglobin variant E. Hb=haemoglobin.

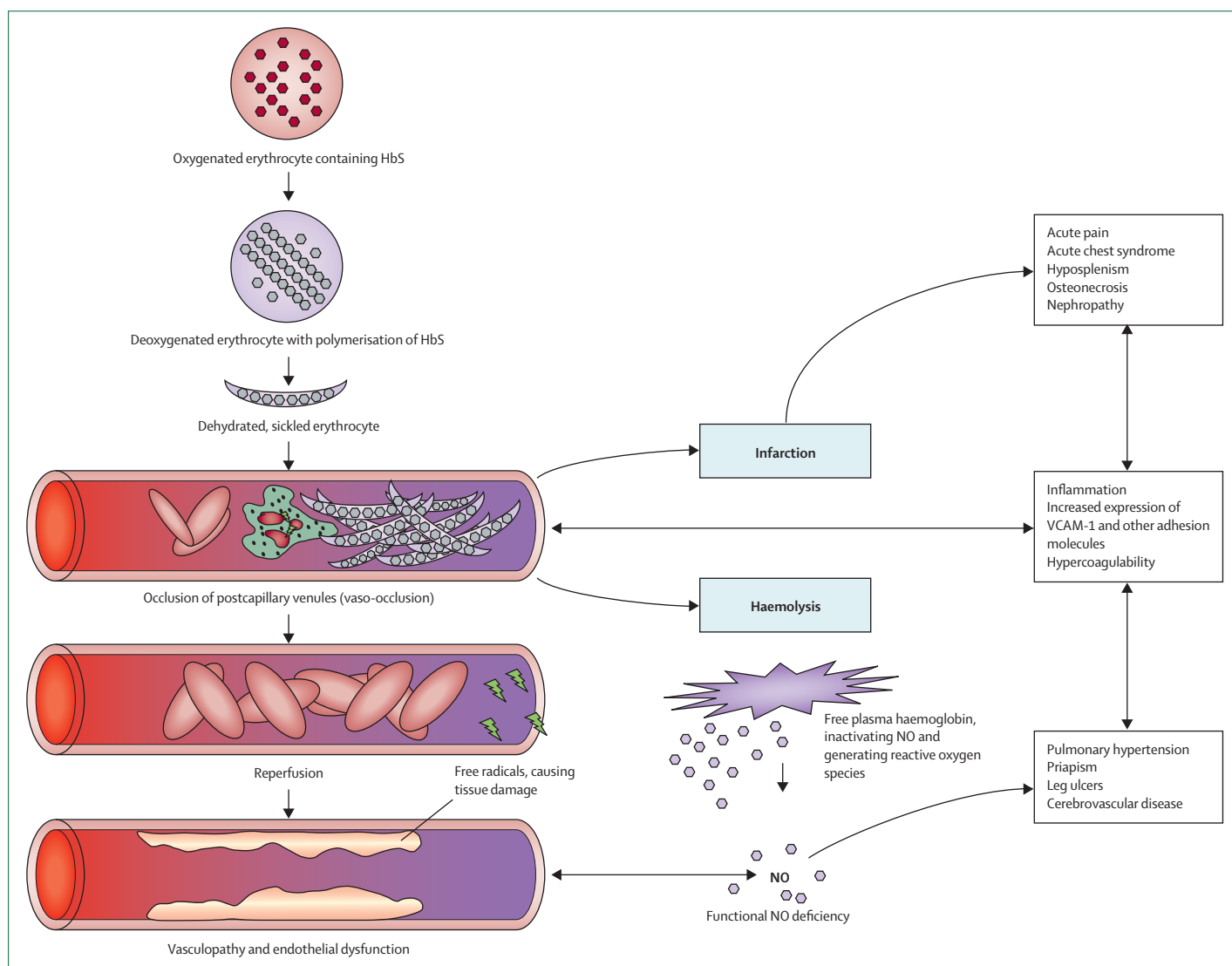
**Table 2: Different types of sickle-cell disease**

haemolysis. Free plasma haemoglobin generates reactive oxygen species, such as the hydroxyl and superoxide radical,<sup>41</sup> which is a potent scavenger of nitric oxide.<sup>42</sup> Nitric oxide is normally produced by the endothelium and regulates basal vasodilator tone, and inhibits platelet and haemostatic activation and transcriptional expression of nuclear factor  $\kappa\text{B}$  (NF  $\kappa\text{B}$ )-dependent adhesion molecules, such as vascular cell-adhesion molecule-1, intercellular cell-adhesion molecule-1, and the selectins.<sup>43,44</sup> The release of haemoglobin into the plasma during haemolysis potentially inhibits endothelial nitric oxide signalling, leading to endothelial cell dysfunction and nitric oxide resistance.<sup>42,45</sup> Haemolysis also releases erythrocyte arginase-1 into plasma. Arginase metabolises plasma arginine into ornithine, decreasing the required substrate for nitric oxide synthesis and compounding the decreased bioavailability of nitric oxide in patients with sickle-cell disease.<sup>46</sup>

Chronic depletion of nitric oxide and arginine might also contribute to the hypercoagulable state in haemolytic diseases. Studies have shown correlations between the rate of haemolysis and levels of platelet activation and procoagulant factors in the blood.<sup>47</sup> Haemolysis is also associated with the formation of erythrocyte microvesicles containing phosphatidyl serine, which is an activator of tissue factor; the numbers of microvesicles are increased further by the functional asplenia present in patients with sickle-cell disease<sup>48</sup> (figure 2).

## Epidemiology

The global distribution of HbS is indicative of two factors: selection for carriers through their survival advantage in malaria-endemic regions and subsequent migration. Four region-specific African haplotypes (the Senegal, Benin, Bantu, and Cameroon haplotypes) and one Asian haplotype (the Arab-India haplotype) have been defined, providing support for the hypothesis that the mutation causing HbS has occurred, and been locally amplified, on at least two, and possibly several, separate occasions.<sup>49</sup> The evidence that malaria caused this amplification, which was first suggested more than 60 years ago,<sup>50</sup> is now substantial. In addition to the close geographic correlation between the frequency of the HbS gene in populations and the historic incidence of malaria<sup>49</sup> (figure 3), evidence for the partial resistance of carriers to all forms of *Plasmodium falciparum* malaria has been reported in many populations.<sup>55,56</sup> Although the mechanism of this protection is yet to be fully understood, it probably includes both innate and immune-mediated mechanisms.<sup>57</sup> The genetic defects that commonly combine with HbS to result in sickle-cell disease (HbC and  $\beta$ -thalassaemia) have also occurred through malaria selection,<sup>49,57</sup> with the result that such defects reach their highest frequencies in similar populations.<sup>49</sup> The prevalence of sickle-cell disease is highest in sub-Saharan Africa. Although the scarcity of



**Figure 2: Pathophysiology of sickle-cell disease**

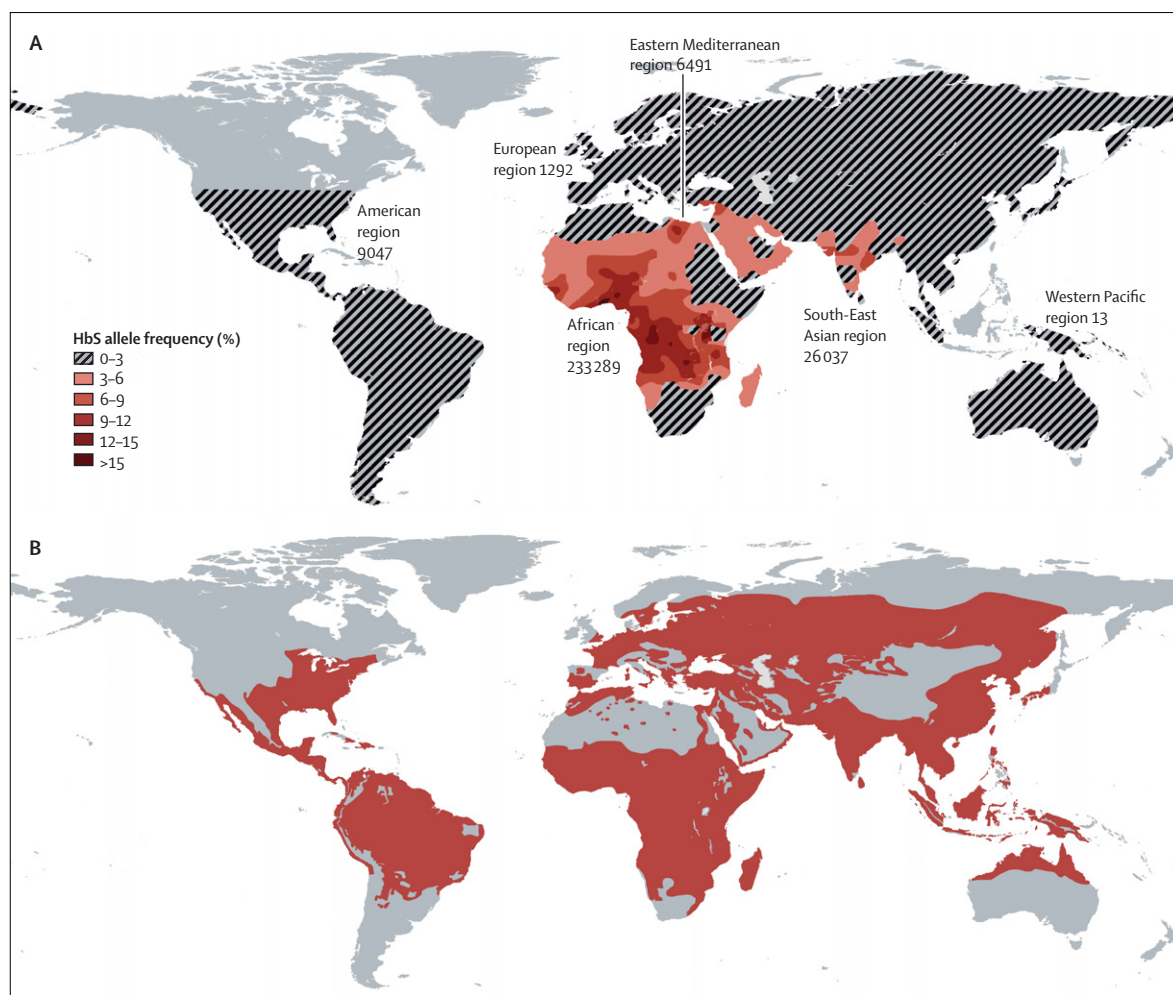
The roles of HbS polymerisation, hyperviscosity, vaso-occlusion, haemolysis, and endothelial dysfunction are shown. Deoxygenation causes HbS to polymerise, leading to sickled erythrocytes. Vaso-occlusion results from the interaction of sickled erythrocytes with leucocytes and the vascular endothelium. Vaso-occlusion then leads to infarction, haemolysis, and inflammation; inflammation enhances the expression of adhesion molecules, further increasing the tendency of sickled erythrocytes to adhere to the vascular endothelium and to worsen vaso-occlusion. Reperfusion of the ischaemic tissue generates free radicals and oxidative damage. The damaged erythrocytes release free haemoglobin into the plasma, which strongly binds to nitric oxide, causing functional nitric oxide deficiency and contributing to the development of vasculopathy. HbS=sickle haemoglobin. NO=nitric oxide. VCAM=vascular cell-adhesion molecule.

diagnostic facilities means that precise data are not available, a recent estimate<sup>52</sup> suggests that more than 230 000 affected children are born in this region every year (0·74% of the births in sub-Saharan Africa), which is about 80% of the global total. By comparison, the yearly estimate of affected births in North America is 2600 and 1300 in Europe<sup>52</sup> (figure 3).

Little is known about sickle-cell disease in Africa.<sup>58,59</sup> Generally, diagnostic facilities are poor, routine screening is absent, and, despite the fact that most patients would survive if provided with a simple package of inexpensive interventions,<sup>60</sup> most die undiagnosed in early childhood.

Despite the high mortality associated with this disease in Africa, the causes of death in affected children are poorly documented. Although widely ascribed to two diseases—bacteraemia and malaria<sup>14,58</sup>—few substantial data are available to lend support to either potential cause. However, in a study undertaken in an African population,<sup>61</sup> both the range of organisms and the frequency of bacteraemia caused by *Streptococcus pneumoniae* and *Haemophilus influenzae* in children with sickle-cell disease were similar to those reported in Jamaica and the USA.<sup>8,62</sup> This finding suggests that, with prophylaxis against both *H influenzae* and *S pneumoniae*, the occurrence of bacteraemia in children with sickle-cell





**Figure 3: Global distributions of HbS and malaria**

(A) This map shows the distribution of the HbS allele. It was constructed with digitised data derived from Cavalli-Sforza and colleagues.<sup>57</sup> The figures indicate estimates for the combined yearly total number of individuals affected by HbSS, HbSC, and HbS/ $\beta$ -thalassaemia by WHO region (adapted from Modell and Darlison<sup>57</sup>). (B) This map shows the global distribution of malaria (red) before intervention to control malaria (adapted from Lysenko and Semashko,<sup>58</sup> and Hay and colleagues.<sup>54</sup> HbS=sickle haemoglobin.

disease in Africa could be reduced by as much as 50%, providing strong support for early diagnosis.

Although malaria is commonly thought of as a major cause of death in African patients with sickle-cell disease,<sup>58</sup> this opinion is supported by few data. Most published reports have not had controls to enable comparisons of risk with patients without disease, and several intervention studies have not had the power to definitively assess the risk of death in African patients with sickle-cell disease.<sup>63</sup> In a study from Tanzania,<sup>64</sup> the frequency of malarial parasitaemia was lower in patients with sickle-cell anaemia than in those with normal haemoglobin; of those with sickle-cell anaemia in hospital, parasitaemia was a risk factor for both severe anaemia (haemoglobin <50 g/L), and death. Similarly, in a study in Kenya,<sup>65</sup> mortality from malaria was higher in children with sickle-cell anaemia than in those with normal haemoglobin, although

malarial prevalence in individuals with sickle-cell anaemia was not increased.

With a historic background of low health spending and high rates of overall child mortality, children born with sickle-cell disease in Africa are given a low priority. However, in view of the sustained declines in child mortality that are being recorded throughout much of Africa,<sup>66</sup> a growing proportion of overall deaths in childhood are now attributable to sickle-cell disease, and survivors will place an increasing demand on health services. A better understanding of the presenting features and natural history of this disease in Africa will therefore be essential if rational approaches to its diagnosis and management are to be developed. There have been some encouraging signs that attitudes to sickle-cell disease in Africa are changing; the disease has now been recognised as a health-care priority by both WHO and the United Nations. Early life

screening has been introduced in parts of several African countries,<sup>67</sup> and a network has been formed to support the acquisition of evidence-based research (the Global Sickle Cell Disease Network).

### Phenotypic heterogeneity

The presentation and clinical course of sickle-cell disease shows substantial variation. For example, in the Cooperative Study of Sickle Cell Disease in the USA,<sup>68</sup> 39% of 3578 patients with sickle-cell anaemia had no episodes of pain but 1% had more than six per year. Such variability is characteristic of the disease and many of its complications, including cerebrovascular disease, acute chest syndrome, and premature death.

The two best established genetic modifiers are determinants of fetal haemoglobin concentrations and co-inheritance of  $\alpha$ -thalassaemia. The maintenance of high fetal haemoglobin concentrations beyond infancy has long been recognised to ameliorate many aspects of sickle-cell disease,<sup>6</sup> including predicting increased life expectancy,<sup>30</sup> and reducing the frequency of both acute pain<sup>68</sup> and leg ulcers.<sup>69</sup> The fetal haemoglobin concentration in patients with sickle-cell anaemia varies from 1% to 30%, and is inherited as a quantitative genetic trait. Three major loci have been identified, which account for up to 50% of this variation in sickle-cell anaemia: the *XmnI* polymorphism in the promoter region of the  $\gamma$  globin genes,<sup>70</sup> the *HMIP* locus on chromosome 6q23.3,<sup>71</sup> and *BCL11A* on chromosome 2.<sup>72</sup> Genetic variation at these three loci is likely to account for some of the clinical diversity seen in sickle-cell disease, as has already been reported for acute pain,<sup>73</sup> and could be targeted to help to improve prenatal diagnosis and accuracy of neonatal prognostication.

$\alpha$ -thalassaemia trait exists in up to 30% of patients of African origin with sickle-cell disease,<sup>74</sup> and is present in more than 50% of patients with this disease in India<sup>75</sup> and Saudi Arabia.<sup>76</sup>  $\alpha$ -thalassaemia reduces the concentration of haemoglobin in each erythrocyte, decreasing the tendency of HbS to polymerise, which results in increased haemoglobin concentrations and decreased rates of haemolysis. The clinical effects of  $\alpha$ -thalassaemia are variable but generally beneficial for patients, with reduced occurrence of stroke,<sup>77</sup> gall stones,<sup>78</sup> leg ulcers,<sup>74</sup> and priapism,<sup>79</sup> although pain frequency is not reduced.<sup>68</sup> Data from some studies indicate an increased frequency of pain in patients with  $\alpha$ -thalassaemia, possibly associated with the increased haematocrit and blood viscosity.<sup>80</sup>

Several genetic association studies have been done to try and link single nucleotide polymorphisms with particular complications of sickle-cell disease. Some associations are well described and make biological sense, such as the link between UGT1A promoter polymorphisms and gall stones.<sup>78</sup> Most studies have investigated large-vessel stroke, and two independent studies have suggested an association with the tumour necrosis factor promoter polymorphism at position

–308.<sup>81,82</sup> Bayesian modelling with single nucleotide polymorphisms from 12 genes can also predict risk of stroke with 98.2% accuracy.<sup>83</sup> However, most genetic associations are tentative, and confirmatory studies are needed.<sup>84</sup>

Environmental factors are poorly characterised, but could give rise to a large amount of phenotypic variability, as indicated by the much greater severity of sickle-cell disease reported in Africa than that for other continents. In tropical countries, increased episodes of acute pain in the rainy season are reported.<sup>85</sup> In temperate countries, the effects of rain and cold might be important but are less well documented, although windy weather has been linked to an increased occurrence of pain.<sup>86</sup> The effects of air pollution are uncertain. Data from studies suggest that high ozone concentrations might be linked to acute pain; however, the importance of atmospheric concentrations of nitric oxide and carbon monoxide is unknown.<sup>87,88</sup>

### General management

#### Diagnosis and screening

Diagnosis of sickle-cell disease is based on analysis of haemoglobin. Typically, this analysis involves protein electrophoresis or chromatography, which are cheap techniques and widely available worldwide, although haemoglobin mass spectrometry and DNA analysis are being increasingly used because these techniques enable high-throughput testing.<sup>89</sup> Antenatal screening is available to women in some countries to help to identify couples who are at risk of having a baby with sickle-cell disease, and to offer prenatal diagnosis.<sup>89</sup> Universal neonatal screening programmes are established in the USA and England, with other programmes being developed in Europe and Africa.<sup>67</sup> Some of the improvement in survival in sickle-cell disease over the past few decades has been attributed to neonatal screening, facilitating early access to prophylaxis with penicillin, comprehensive care, and parental education on the early detection of complications such as acute splenic sequestration (panel 1).<sup>90</sup>

#### Hydroxycarbamide

Many cytotoxic drugs increase fetal haemoglobin concentrations, which is potentially beneficial in patients with sickle-cell disease. Hydroxycarbamide was chosen for studies of sickle-cell disease because of its oral efficacy and low toxic effects,<sup>91</sup> although other beneficial effects have subsequently emerged, including increasing haemoglobin concentrations, decreasing platelet and white cell counts, changing expression of adhesion molecules,<sup>92</sup> and nitric oxide generation.<sup>93</sup> In a randomised controlled trial,<sup>11</sup> hydroxycarbamide decreased the frequency of painful episodes, acute chest syndrome, the need for blood transfusion, and admission to hospital in patients with sickle-cell anaemia. Many subsequent studies have shown evidence of similar benefit in both adults and children.<sup>94,95</sup> Hydroxycarbamide is well tolerated, with dose-dependent

For more on the Global Sickle Cell Disease Network see <http://globalscd.ning.com>

### Panel 1: Recommended outpatient management of sickle-cell disease

- Education for patients, parents, and carers
- Monitoring of growth, development, and nutrition
- Prescription of penicillin and monitoring of adherence
- Administration of or organisation of vaccinations specific for sickle-cell disease, including those against pneumococcus and influenza
- Monitoring of school or work attendance
- Recording of steady-state blood results and physiological measurements (oxygen saturation, blood pressure)
- Monitoring of frequency of acute complications
- Prescription and monitoring of hydroxycarbamide as appropriate
- Early detection and prevention of chronic complications, including cerebrovascular disease (transcranial doppler scanning), pulmonary hypertension, and renal disease
- Provision of psychological support

### Panel 2: Indications for blood transfusion in sickle-cell disease

#### Indications for acute transfusions

##### *Acute exacerbation of anaemia*

Typically caused by Parvovirus B19 infection, splenic or hepatic sequestration, or severe vaso-occlusion; simple transfusion is necessary to increase haemoglobin concentrations to 80–90 g/L

##### *Acute chest syndrome*

Early simple top-up transfusion is beneficial, with exchange transfusion to reduce HbS to less than 30% if deterioration of clinical condition occurs

##### *Stroke or acute neurological deficit*

Urgent transfusion to increase haemoglobin concentrations to 100 g/L, and reduce HbS to less than 30%, which typically requires exchange transfusion

##### *Multiorgan failure*

HbS to less than 30% with haemoglobin concentration of 100 g/L

##### *Preoperative management*

Target HbS of less than 30% before major surgery (cardiothoracic, neurosurgery), typically requiring exchange transfusion; medium-risk or low-risk surgery might need simple transfusion to increase haemoglobin concentration to 100 g/L

#### Indications for regular, long-term transfusions

##### *Primary and secondary stroke prevention*

Regular transfusions, either simple or exchange, to keep HbS less than 30%

##### *Recurrent acute chest syndrome not helped by hydroxycarbamide*

Regular transfusions, either simple or exchange, to keep HbS less than 30%

##### *Progressive organ failure*

Including hepatic, renal, cardiac, and pulmonary failure; little evidence-based practice and transfusion strategies vary widely

##### *Other indications*

Recurrent splenic sequestration, complicated pregnancy

##### *Controversial indications*

Frequent acute pain, chronic pain, avascular joint necrosis, leg ulcers, priapism

myelosuppression being the main short-term side-effect. Concern has been raised about the possibility of hydroxycarbamide predisposing towards malignant disease, although there is little evidence to support this notion.<sup>95</sup> On the basis of studies in mice and several case reports, there is also concern that hydroxycarbamide might cause irreversible male subfertility, although this tenet needs to be studied prospectively.<sup>96</sup> Individuals who are receiving hydroxycarbamide are generally advised to avoid pregnancy and conception, although no evidence of teratogenicity was reported in a study of 94 pregnancies in which one member of the couple was taking the drug at the time of conception.<sup>97</sup>

Hydroxycarbamide might have other benefits, including increasing life expectancy,<sup>98,99</sup> protection against cerebrovascular disease,<sup>100</sup> and reduction of hypoxaemia<sup>101</sup> and proteinuria.<sup>102</sup> On the basis of our experience, 10–30% patients in Europe and the USA take hydroxycarbamide, although precise figures are not available. Because of fears about toxic effects, use is generally limited to patients after a severe clinical course, although emerging data, particularly for prolonged survival, suggest that this treatment is underused.<sup>103</sup>

#### Blood transfusion and iron chelation

Erythrocyte transfusion has an established role in the management of both acute and chronic complications in sickle-cell disease (panel 2). Transfusion corrects anaemia, decreases the percentage of HbS, suppresses HbS synthesis, and reduces haemolysis, all of which are of potential benefit. Erythrocytes can be given as a simple additive transfusion or by exchange, in which blood is also removed. Exchange transfusion is more likely to be necessary if the initial haemoglobin concentration is high, or if there is a need for rapid decrease in HbS percentage without increasing the haematocrit and blood viscosity, typically in people with acute neurological symptoms. Exchange transfusion is most effectively done by use of automated apheresis machines, although use is limited by difficulties with venous access, especially in children.<sup>104</sup> Patients with sickle-cell disease are at risk of alloimmunisation because of differences between the ethnic origin of blood donors and patients, and blood is typically subject to an extended crossmatch for ABO, full Rhesus (Cc/D/Ee), and Kell blood groups.<sup>105</sup> In countries where most of the blood donors are of European origin, this procedure reduces alloimmunisation by 50% and is recommended practice. Chronic blood transfusion is inevitably associated with iron overload, although the pattern of hemosiderosis seems different to that described in thalassaemia; in particular, most iron loading occurs in the liver, with little cardiac iron deposition.<sup>106</sup> Iron chelation is important in chronically transfused patients with sickle-cell disease, mainly to avoid liver damage; desferrioxamine can be given parenterally, although the oral iron chelator deferasirox is increasingly used with evidence of benefit.<sup>107</sup>

### Haemopoietic cell transplantation and stem-cell gene transfer

Haemopoietic cell transplantation was first used in sickle-cell disease 25 years ago and is the only curative treatment.<sup>10</sup> However, only a few hundred patients have received transplantation worldwide, and this procedure is mostly confined to children with HLA-compatible siblings, in whom the procedure is safest. Most children with sickle-cell disease have few overt complications, and haemopoietic cell transplantation is only considered when serious complications have occurred, most often in children with cerebrovascular disease who are effectively dependent on transfusions. Data from studies indicate an overall survival of 92–94%, event-free survival of 82–86%, and a transplant-related mortality of 7%.<sup>108</sup> Balancing of the short-term risk of death against the long-term complications of a chronic disease is difficult. In a study,<sup>109</sup> nine adults with sickle-cell disease received transplantation with non-myeloablative conditioning and long-term immunosuppression, resulting in stable chimerism and resolution of symptoms; further development of this approach is likely to increase the number of transplants by both decreasing toxic effects and increasing the numbers eligible for haemopoietic cell transplantation. Further studies are now being planned with haploidentical family donors using immunotolerance induction strategies.

Gene therapy continues to offer promise. Lentiviral-mediated gene transfer can correct haematological defects and organ damage in mice with sickle-cell disease,<sup>110</sup> and a clinical trial has started in France.<sup>111</sup> Future developments might include the use of induced pluripotent stem cells as a source of haemopoietic progenitors for gene therapy, and this approach recently successfully corrected sickle-cell disease in mice.<sup>112</sup>

### Management of specific complications

#### Acute pain

Acute pain is the most common reason for admission to hospital for both adults and children, although it is more common in teenagers and young adults than in young children. Although acute vaso-occlusive pain is typically self-limiting and does not result in permanent organ damage, it is the most important complication from the patient's perspective, and increased frequency of pain is associated with early death in patients with sickle-cell anaemia who are older than 20 years.<sup>68</sup> Frequent episodes of acute pain are associated with sickle-cell anaemia (compared with HbSC disease), high haematocrit, low fetal haemoglobin concentrations,<sup>68</sup> sibling history of asthma,<sup>113</sup> and nocturnal hypoxaemia.<sup>114</sup> Opiate analgesia is the mainstay in the management of severe pain, with data from a randomised controlled trial indicating no additional benefit from ketoprofen.<sup>115</sup> Management is increasingly based on oral opiates, which seem to be equivalent to parenteral opiates in children.<sup>116</sup> A confidential enquiry into deaths of patients with sickle-cell disease in the UK identified opiate-related oversedation

as a cause of death, emphasising the importance of careful monitoring and the involvement of specialist pain teams.<sup>117</sup> Corticosteroids can also shorten episodes of acute pain, although use of these drugs has mostly stopped because of a high frequency of rebound pain and hospital re-admission.<sup>118</sup> In trials of poloxamer 188<sup>119</sup> and inhaled nitric oxide,<sup>120</sup> marginal benefits were reported and a larger placebo-controlled trial of nitric oxide is being analysed.<sup>121</sup> Despite the importance of pain, no specific treatments are available that can change the natural history of an acute episode, and little research is being done in this area.

#### Infection

Bacterial infections are a major cause of morbidity and mortality in children with sickle-cell disease. The increased susceptibility of affected children is likely to result from several causes, including impaired splenic function, defects in complement activation, micronutrient deficiencies, and tissue ischaemia.<sup>14</sup> Several organisms, including *S pneumoniae*, *H influenza*, and non-typhi *Salmonella* species, have been identified as important causes of infection in developed countries,<sup>14</sup> where substantial improvements in prognosis have followed the introduction of penicillin prophylaxis and immunisation with conjugate vaccines directed against *S pneumoniae* and *H influenzae* type b.<sup>8,9,122</sup> Similar organisms are probably involved in most of the infections in patients in sub-Saharan Africa,<sup>61</sup> although data are less clear.<sup>58</sup>

#### Neurological complications

Sickle-cell anaemia is one of the most common causes of stroke in children. Most cases are associated with vasculopathy affecting the distal internal carotid and middle cerebral arteries, although extracranial vasculopathy can also be present.<sup>123</sup> Although the mechanisms for stroke remain uncertain, contributory factors to this vasculopathy include anaemia, leucocytosis, hypoxaemia, abnormal rheology causing endothelial damage, functional nitric oxide deficiency associated with haemolysis,<sup>77,124</sup> and impaired regulation of blood flow causing hyperaemia.<sup>125,126</sup> The vasculopathy seems to start in infancy, with a first-stroke incidence of 1·02 per 100 patient-years between the ages of 2 years and 5 years, and 11% of patients with sickle-cell disease have had a stroke by the age of 20 years.<sup>32</sup> Vasculopathy can be detected at an early stage by use of transcranial doppler scanning. In the Stroke Prevention in Sickle Cell Anemia (STOP) study,<sup>12</sup> regular blood transfusion to keep HbS below 30% reduced the risk of stroke by 90% in patients with increased transcranial doppler velocities. A programme of transcranial doppler screening has been established in some countries, with evidence of a decrease in stroke incidence.<sup>127</sup> Studies are investigating the role of hydroxycarbamide in the prevention of cerebrovascular disease.<sup>100</sup> In the Stroke with Transfusions Changing to Hydroxyurea (SWITCH)



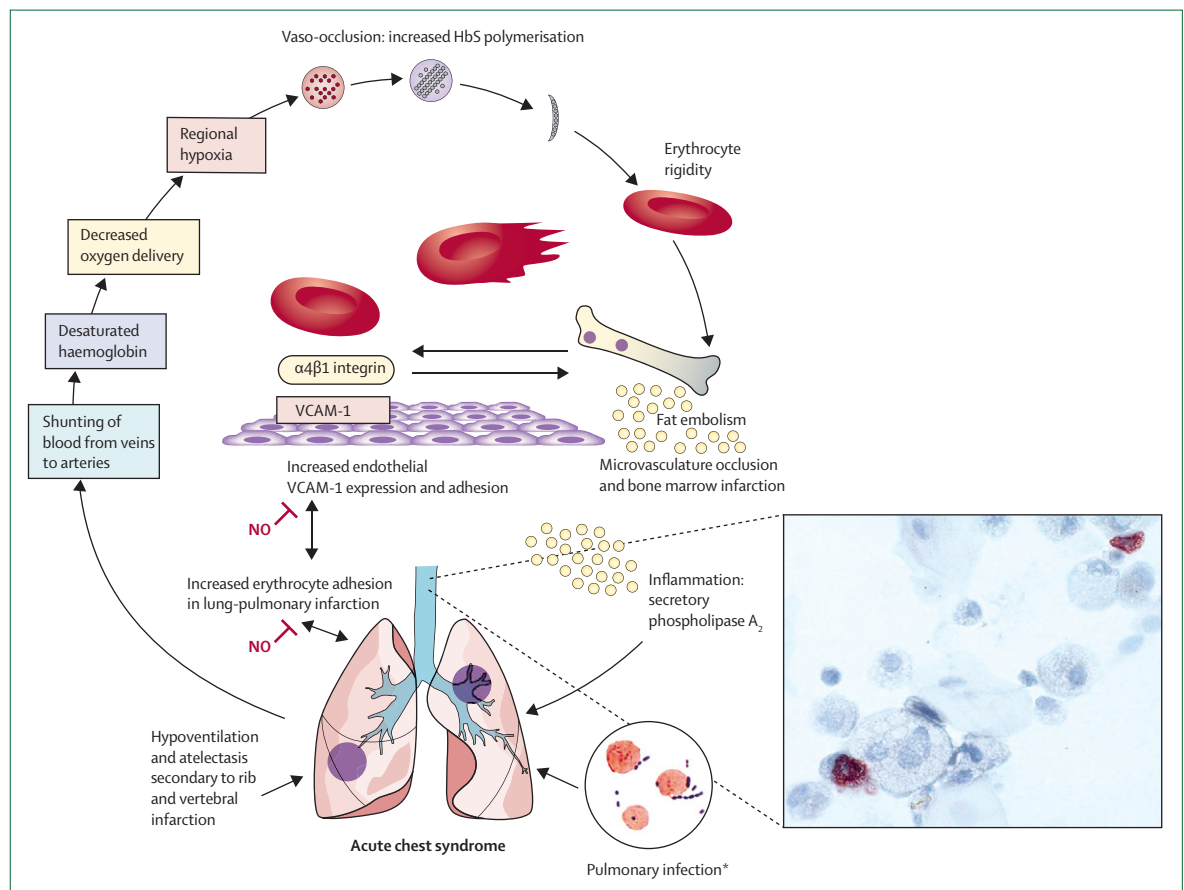
study, the efficacy of regular blood transfusions and iron chelation was compared with hydroxyurea and phlebotomy in children with sickle-cell disease and stroke. However, the study was stopped prematurely because of the high number of strokes in the hydroxyurea group; no strokes occurred in 66 children receiving blood transfusions, but seven strokes occurred in the 67 children taking hydroxyurea.<sup>128</sup>

Once a stroke has occurred, the risk of recurrence is more than 60%, although this risk is substantially reduced by starting a transfusion programme.<sup>129</sup> Some children have progressive vasculopathy, with a moyamoya-like syndrome and further strokes despite transfusion; neurosurgical revascularisation might be helpful in these circumstances.<sup>130</sup>

In studies in which MRI is used, up to 20% of children with sickle-cell disease have silent brain infarcts,

typically involving watershed areas in the frontal lobes.<sup>125</sup> These pathological changes also seem to occur in young children.<sup>131</sup> Silent infarcts are linked to neurocognitive problems, fits, and risk of further brain infarction.<sup>125</sup> The possibility of preventing progression of these infarcts with blood transfusions is being studied in a randomised controlled clinical trial.<sup>132</sup> Cognitive impairment also occurs in the absence of brain infarction, with a suggestion that this neurological deficit might be partly attributable to anaemia and hypoxia.<sup>133</sup>

Intracranial bleeds occur in patients of all ages, but are most common between the ages of 20 years and 30 years; they are typically associated with either a moyamoya-like syndrome or cerebral aneurysms. Treatment is neurosurgical and the outcome is poor, with 26% mortality at 2 weeks.<sup>32</sup>



**Figure 4: Pathophysiology of acute chest syndrome**

Infection or other inflammatory stimuli cause pulmonary hypoxia and increased expression of endothelial adhesion molecules, including  $\alpha 4 \beta 1$  and VCAM-1; this precipitates HbS polymerisation and vaso-occlusion, causing further hypoxia and inflammation and creating a constant cycle. Vaso-occlusion causes the release of free plasma haemoglobin, which reduces NO availability, altering VCAM-1 expression. Vaso-occlusion and bone marrow infarction can cause fat embolism, further damaging the pulmonary circulation. The stain shows oil-red O staining of pulmonary alveolar macrophages, showing the characteristic red lipid inclusions that are diagnostic of fat embolism. Secretory phospholipase A<sub>2</sub> concentrations, which increase in response to inflammation and are known to be very high in acute chest syndrome, further increase expression of adhesion molecules in the pulmonary vasculature, causing more vaso-occlusion. \*29% *Chlamydia pneumonia*, 20% *Mycoplasma pneumonia*, 2% *Legionella pneumonia*, 10% respiratory syncytial virus, 4% parvovirus, 3% rhinovirus, 2% parainfluenza virus, 2% parainfluenza A virus, 2% cytomegalovirus, 1% Epstein-Barr virus, and 1% herpes simplex virus; *Staphylococcus aureus* was isolated in 5% of cases and *Streptococcus pneumoniae* in only 4% of cases. Adapted from Murray and colleagues,<sup>137</sup> with permission from Elsevier. VCAM-1=vascular cell-adhesion molecule-1. NO=nitric oxide.

### Acute chest syndrome

Acute chest syndrome is the second most common cause of hospital admission in patients with sickle-cell disease. It is a form of acute lung injury and is defined as the development of a new alveolar pulmonary infiltrate involving at least one lung segment.<sup>134</sup> This syndrome is caused by a combination of infection, fat embolism, and vaso-occlusion of the pulmonary vasculature. Severity varies, but 13% of patients require mechanical ventilation and 3% die.<sup>135</sup> Treatment involves broad-spectrum antibiotics, bronchodilators, and oxygen. If haemoglobin concentrations decrease substantially or the patient's clinical condition deteriorates, blood transfusion is commonly given. Support is increasing for the use of early top-up transfusion, with exchange transfusion reserved for severe cases.<sup>135</sup> Dexamethasone can improve clinical condition and reduce the need for blood transfusion in children with acute chest syndrome, although use is limited by the occurrence of rebound pain on stopping

corticosteroids and by the concern about infection<sup>136</sup> (figure 4).

### Pulmonary hypertension

Pulmonary hypertension is an increasingly recognised complication of sickle-cell disease in teenagers and adults. In three prospective studies in adults,<sup>33,36,37</sup> in which echocardiography was used to measure tricuspid regurgitant jet velocity, 20% of the participants had mild elevation in estimated pulmonary artery pressures, defined by a pulmonary artery systolic pressure greater than 35 mm Hg (upper limit of normal is 32 mm Hg), and 9% had moderate-to-severe pulmonary hypertension (>45 mm Hg). Despite increases in pulmonary pressure that are much lower than those observed in patients with idiopathic or hereditary pulmonary hypertension, the prospective risk of death associated with even mild pulmonary hypertension is high in patients with sickle-cell disease.<sup>33,36,37</sup> In a French study,<sup>138</sup> despite the exclusion of patients with low creatinine clearance, reduced lung capacity, and liver disease—all additional major risk factors for the development of pulmonary hypertension—6% of 385 patients had a mean pulmonary artery pressure of greater than 25 mm Hg at right heart catheterisation. Although this prevalence is lower than in studies using echocardiography, the occurrence of pulmonary hypertension is high compared with other diseases associated with its development, and all deaths occurred in those with pulmonary hypertension.<sup>138</sup>

We are not aware of any robust evidence about how best to treat pulmonary hypertension in patients with sickle-cell disease. Risk factors such as hypoxaemia, sleep apnoea, pulmonary thromboembolic disease, restrictive lung disease, left ventricular systolic and diastolic dysfunction, severe anaemia, and iron overload need to be identified and treated. Treatment options include hydroxycarbamide, with regular blood transfusions if there is no response.<sup>134</sup> In patients with severe pulmonary hypertension (tricuspid

#### Panel 3: Treatment options for some complications of sickle-cell disease

##### Avascular necrosis of the femoral head

Possible benefit from core decompression<sup>144</sup> and autologous bone marrow grafting<sup>145</sup>

##### Proliferative retinopathy

Role of laser photocoagulation uncertain;<sup>146</sup> case reports of benefit from intravitreal bevacizumab<sup>147</sup>

##### Sickle hepatopathy

Emerging use of liver transplantation in severe liver disease<sup>148</sup>

##### Priapism

Adrenergic agonists form mainstay of preventive treatment, with emerging use of phosphodiesterase-5 inhibitors and finasteride<sup>149</sup>

	Therapeutic approach	Specific examples
To reduce infective complications	Improve vaccination against <i>Streptococcus pneumoniae</i>	7-valent and 13-valent conjugated vaccines
To reduce tissue hypoxia	Treat sleep-disordered breathing, blood substitutes	Overnight oxygen, continuous positive airways pressure, pegylated haemoglobin
To reduce erythrocyte dehydration	Inhibit Gardos channels and other cation channels	Magnesium, zinc, dipyridamole, senicapoc
To improve rheology	Block surfactant, endothelin receptors	Poloxamer-188, bosentan
To improve nitric oxide availability	Increase nitric oxide availability, release, and synthesis	Inhaled nitric oxide, arginine, nitrites, sildenafil, statins
To reduce inflammation	Treat with corticosteroids, secretory phospholipase A2 inhibitors	Dexamethasone, varespladib
To reduce erythrocyte adhesion	Treat with anticoagulants, reduce endothelial activation	Heparin, sulfasalazine
To increase fetal haemoglobin production	Treat with cytotoxic drugs, short-chain fatty acids, immunomodulatory drugs	Decitabine, butyrate, pomalidomide, lenalidomide
To reduce tissue damage	Treat with antioxidants	Glutamine, N-acetyl cysteine
Empirical use	Treat with phytochemicals	Nix-0699

Further information is reviewed by Hagar and Vichinsky.<sup>150</sup>

**Table 3: Emerging therapeutic approaches for treatment of sickle-cell disease by mechanism**

regurgitant jet velocity  $\geq 3$  m/s), right heart catheterisation is necessary to confirm diagnosis and to directly assess left ventricular function. Endothelin receptor antagonists (eg, bosentan and ambrisentan), prostaglandin-based therapy (eg, epoprostenol, treprostinol, and iloprost), and the phosphodiesterase-5 inhibitors (eg, sildenafil) are all used to treat idiopathic pulmonary hypertension and might be of benefit for patients with sickle-cell disease. Treatment with oral sildenafil improved exercise tolerance and pulmonary hypertension in patients with sickle-cell disease,<sup>139</sup> although a multicentre, placebo-controlled trial of sildenafil for pulmonary hypertension in sickle-cell disease was stopped early because of an unexpected increase in hospital admissions for acute pain in the treatment group.

### Heart disease

Left-sided heart disease occurs in about 13% of adults with sickle-cell disease and is mainly caused by diastolic dysfunction; systolic dysfunction can also occur and valvular disease is present in about 2% of patients.<sup>33</sup> The presence of diastolic dysfunction alone in patients with sickle-cell disease is an independent risk factor for mortality.<sup>140</sup> Patients with both pulmonary vascular disease and diastolic dysfunction are at a particularly high risk of death (odds ratio for death 12.0, 95% CI 3.8–38.1,  $p < 0.001$ ).<sup>140</sup> Pulmonary pressures rise acutely during vaso-occlusive pain and even more during acute chest syndrome. In a study,<sup>141</sup> 13% of patients manifested right heart failure with acute chest syndrome, and this subgroup had the highest risk of mechanical ventilation and death.

### Renal complications

Renal damage is almost inevitable in sickle-cell disease. There is a strong tendency for HbS to polymerise in the renal medulla, because of the low partial pressure of oxygen, the low pH, and the high osmolality causing erythrocyte dehydration. The consequent vaso-occlusion causes renal infarction with papillary necrosis, and medullary fibrosis with focal segmental glomerulosclerosis. Glomerular hyperfiltration and tubular dysfunction also occur, and are possibly associated with anaemia and increased sensitivity to prostaglandins.<sup>142</sup> Renal dysfunction is apparent from an early age in patients with sickle-cell anaemia, with glomerular hyperfiltration apparent at 13 months.<sup>143</sup> Micro-albuminuria is common in childhood and up to 20% of adults develop nephrotic-range protein loss, with more than 3.5 g proteinuria in 24 h.<sup>142</sup> 30% of adults develop chronic renal failure, which is a contributory factor in many deaths.<sup>30</sup> Other renal manifestations include haematuria, renal medullary carcinoma, and nocturnal enuresis.<sup>142</sup> Treatment is beginning to focus on the early use of hydroxycarbamide and angiotensin-converting enzyme inhibitors in children with clinically significant albuminuria,<sup>102</sup> although there is little supportive evidence at present. In end-stage kidney failure, 10-year survival

was 56% for patients after renal transplantation, compared with 14% for patients on dialysis,<sup>142</sup> suggesting that transplantation is the treatment of choice.

Sickle-cell disease causes multisystem problems, and panel 3 summarises new treatment approaches.

### Future developments

Stem-cell transplantation and gene therapy seem likely to become more widely applicable as new techniques develop, with the use of induced pluripotent stem cells offering the most promise.<sup>112</sup> Data from genetic association studies should help to identify more unlinked and epigenetic factors to explain phenotypic diversity and to enable better prognosis, which might lead to the treatment of specific complications. Many drugs have given in-vitro or early benefit in sickle-cell disease without becoming clinically useful, and table 3 lists some promising pharmaceutical approaches in development. Improved understanding of sickle-cell disease in Africa would benefit the largest number of patients, and could facilitate improved management of patients worldwide, including Europe and the USA.

### Contributors

All authors contributed to the writing and editing of all sections of the Seminar. MTG was mainly responsible for the sections on pathophysiology and cardiopulmonary complications; TNW for the sections on epidemiology, infection, and Africa; and DCR for the rest.

### Conflicts of interest

DCR has received consultancy fees from Sangart and speaker's fees and travel expenses from Novartis; he is chief investigator for the UK for a clinical trial of conjugated pneumococcal vaccine sponsored by Wyeth, and receives research funding from the UK Medical Research Council. TNW is supported by the Wellcome Trust, UK (grant 076934) and the European Virtual Institute for Malaria Research. MTG receives grant support from the Institute for Transfusion Medicine, the Hemophilia Center of Western Pennsylvania, PA, USA; and federal funding from the National Heart, Lung and Blood Institute, National Institute of Diabetes and Digestive and Kidney Diseases, and National Institute of Arthritis and Musculoskeletal and Skin Diseases of the National Institutes of Health (grants R01HL098032, RCIDK085852, and P30AR058910). He has received money for grants or grants pending from the US Government. His institution has received money grants or grants pending from the National Institutes of Health, the US Government, and INO Therapeutics.

### Acknowledgments

We thank Frederic Piel of the Malaria Atlas Project (University of Oxford, Oxford, UK) for producing figure 3, and Vidhya Murthy and Robin Ireland (Department of Haematological Medicine, King's College Hospital, London, UK) for figure 1.

### References

- 1 Weatherall D, Hofman K, Rodgers G, Ruffin J, Hrynkow S. A case for developing North-South partnerships for research in sickle cell disease. *Blood* 2005; **105**: 921–23.
- 2 Herrick JB. Peculiar elongated and sickle-shaped red blood corpuscles in a case of severe anemia. *Arch Intern Med* 1910; **6**: 517–21.
- 3 Sydenstricker VP. Further observations on sickle cell anemia. *J Am Med Ass* 1924; **83**: 12–15.
- 4 Graham GS. Case of sickle cell anemia with necropsy. *Arch Intern Med* 1924; **34**: 778–800.
- 5 Pauling L, Itano HA, Singer SJ, Wells IC. Sickle cell anemia, a molecular disease. *Science* 1949; **110**: 543–48.
- 6 Watson J, Staham AW, Billelo FP. The significance of the paucity of sickle cells in newborn negro infants. *Am J Med Sci* 1948; **215**: 419–23.

- 7 Perutz MF, Liguori AM, Eirich F. X-ray and solubility studies of the haemoglobin of sickle-cell anaemia patients. *Nature* 1951; **167**: 929–31.
- 8 John AB, Ramlal A, Jackson H, Maude GH, Sharma AW, Serjeant GR. Prevention of pneumococcal infection in children with homozygous sickle cell disease. *BMJ* 1984; **26**: 1567–70.
- 9 Gaston MH, Verter JL, Woods G, et al. Prophylaxis with oral penicillin in children with sickle cell anemia. *N Engl J Med* 1986; **314**: 1593–99.
- 10 Johnson FL, Look AT, Gockerman J, Ruggiero MR, Dalla-Pozza L, Billings FT 3rd. Bone-marrow transplantation in a patient with sickle-cell anemia. *N Engl J Med* 1984; **311**: 780–83.
- 11 Charache S, Terrin ML, Moore RD, et al. Effect of hydroxyurea on frequency of painful crises in sickle cell anemia. *N Engl J Med* 1995; **332**: 1317–22.
- 12 Adams RJ, McKie VC, Hsu L, et al. Prevention of a first stroke by transfusions in children with sickle cell anemia and abnormal results on transcranial Doppler ultrasonography. *N Engl J Med* 1998; **339**: 5–11.
- 13 Nagel RL, Fabry ME, Steinberg MH. The paradox of hemoglobin SC disease. *Blood Rev* 2003; **17**: 167–78.
- 14 Serjeant GR, Serjeant BE. Sickle cell disease. Oxford, UK. Oxford University Press, 2001.
- 15 Moo-Penn W, Bechtel K, Jue D, et al. The presence of hemoglobin S and C Harlem in an individual in the United States. *Blood* 1975; **46**: 363–67.
- 16 Monplaisir N, Merault G, Poyart C, et al. Hemoglobin S Antilles: a variant with lower solubility than hemoglobin S and producing sickle cell disease in heterozygotes. *Proc Natl Acad Sci USA* 1986; **83**: 9363–67.
- 17 Witkowska HE, Lubin BH, Beuzard Y, et al. Sickle cell disease in a patient with sickle cell trait and compound heterozygosity for hemoglobin S and hemoglobin Quebec-Chori. *N Engl J Med* 1991; **325**: 1150–54.
- 18 Nagel RL, Daar S, Romero JR, et al. HbS-Oman heterozygote: a new dominant sickle syndrome. *Blood* 1998; **92**: 4375–82.
- 19 Masiello D, Heeney MM, Adewoye AH, et al. Hemoglobin SE disease—a concise review. *Am J Haematol* 2007; **82**: 643–49.
- 20 Geva A, Clark JJ, Zhang Y, Popowicz A, Manning JM, Neufeld EJ. Hemoglobin Jamaica Plain—a sickling hemoglobin with reduced oxygen affinity. *N Engl J Med* 2004; **351**: 1532–38.
- 21 Bunn HF. Pathogenesis and treatment of sickle cell disease. *N Engl J Med* 1997; **337**: 762–69.
- 22 Brittenham GM, Schechter AN, Noguchi CT. Hemoglobin S polymerization: primary determinant of the hemolytic and clinical severity of the sickling syndromes. *Blood* 1985; **65**: 183–89.
- 23 Noguchi CT, Rodgers GP, Serjeant G, Schechter AN. Levels of fetal hemoglobin necessary for treatment of sickle cell disease. *N Engl J Med* 1988; **318**: 96–99.
- 24 Frenette PS. Sickle cell vaso-occlusion: multistep and multicellular paradigm. *Curr Opin Hematol* 2002; **9**: 101–06.
- 25 Turhan A, Weiss LA, Mohandas N, Collier BS, Frenette PS. Primary role for adherent leukocytes in sickle cell vascular occlusion: a new paradigm. *Proc Natl Acad Sci USA* 2002; **99**: 3047–51.
- 26 Belcher JD, Bryant CJ, Nguyen J, et al. Transgenic sickle mice have vascular inflammation. *Blood* 2003; **101**: 3953–59.
- 27 Osarogiagbon UR, Choong S, Belcher JD, Vercellotti GM, Paller MS, Hebbel RP. Reperfusion injury pathophysiology in sickle transgenic mice. *Blood* 2000; **96**: 314–20.
- 28 Wood KC, Hebbel RP, Granger DN. Endothelial cell NADPH oxidase mediates the cerebral microvascular dysfunction in sickle cell transgenic mice. *FASEB J* 2005; **19**: 989–91.
- 29 Belcher JD, Mahaseth H, Welch TE, et al. Critical role of endothelial cell activation in hypoxia-induced vasoocclusion in transgenic sickle mice. *Am J Physiol Heart Circ Physiol* 2005; **288**: H2715–25.
- 30 Platt OS, Brambilla DJ, Rosse WF, et al. Mortality in sickle cell disease. Life expectancy and risk factors for early death. *N Engl J Med* 1994; **330**: 1639–44.
- 31 Pegelow CH, Colangelo L, Steinberg M, et al. Natural history of blood pressure in sickle cell disease: risks for stroke and death associated with relative hypertension in sickle cell anemia. *Am J Med* 1997; **102**: 171–77.
- 32 Ohene-Frempong K, Weiner SJ, Sleeper LA, et al. Cerebrovascular accidents in sickle cell disease: rates and risk factors. *Blood* 1998; **91**: 288–94.
- 33 Gladwin MT, Sachdev V, Jison ML, et al. Pulmonary hypertension as a risk factor for death in patients with sickle cell disease. *N Engl J Med* 2004; **350**: 886–95.
- 34 Kato GJ, Hsieh M, Machado R, et al. Cerebrovascular disease associated with sickle cell pulmonary hypertension. *Am J Hematol* 2006; **81**: 503–10.
- 35 Kato GJ, Gladwin MT, Steinberg MH. Deconstructing sickle cell disease: reappraisal of the role of hemolysis in the development of clinical subphenotypes. *Blood Rev* 2007; **21**: 37–47.
- 36 De Castro LM, Jonassaint JC, Graham FL, Ashley-Koch A, Telen MJ. Pulmonary hypertension associated with sickle cell disease: clinical and laboratory endpoints and disease outcomes. *Am J Hematol* 2008; **83**: 19–25.
- 37 Ataga KI, Moore CG, Jones S, et al. Pulmonary hypertension in patients with sickle cell disease: a longitudinal study. *Br J Haematol* 2006; **134**: 109–15.
- 38 Dham N, Ensing G, Minniti C, et al. Prospective echocardiography assessment of pulmonary hypertension and its potential etiologies in children with sickle cell disease. *Am J Cardiol* 2009; **104**: 713–20.
- 39 Minniti CP, Sable C, Campbell A, et al. Elevated tricuspid regurgitant jet velocity in children and adolescents with sickle cell disease: association with hemolysis and hemoglobin oxygen desaturation. *Haematologica* 2009; **94**: 340–47.
- 40 Rother RP, Bell L, Hillmen P, Gladwin MT. The clinical sequelae of intravascular hemolysis and extracellular plasma hemoglobin: a novel mechanism of human disease. *JAMA* 2005; **293**: 1653–62.
- 41 Repka T, Hebbel RP. Hydroxyl radical formation by sickle erythrocyte membranes: role of pathologic iron deposits and cytoplasmic reducing agents. *Blood* 1991; **78**: 2753–58.
- 42 Reiter CD, Wang X, Tanus-Santos JE, et al. Cell-free hemoglobin limits nitric oxide bioavailability in sickle-cell disease. *Nat Med* 2002; **8**: 1383–89.
- 43 Palmer RM, Ashton DS, Moncada S. Vascular endothelial cells synthesize nitric oxide from L-arginine. *Nature* 1988; **333**: 664–66.
- 44 De Caterina R, Libby P, Peng HB, et al. Nitric oxide decreases cytokine-induced endothelial activation. Nitric oxide selectively reduces endothelial expression of adhesion molecules and proinflammatory cytokines. *J Clin Invest* 1995; **96**: 60–68.
- 45 Gladwin MT. Deconstructing endothelial dysfunction: soluble guanylyl cyclase oxidation and the NO resistance syndrome. *J Clin Invest* 2006; **116**: 2330–32.
- 46 Morris CR, Kato GJ, Poljakovic M, et al. Dysregulated arginine metabolism, hemolysis-associated pulmonary hypertension, and mortality in sickle cell disease. *JAMA* 2005; **294**: 81–90.
- 47 Ataga KI, Moore CG, Hillery CA, et al. Coagulation activation and inflammation in sickle cell disease-associated pulmonary hypertension. *Haematologica* 2008; **93**: 20–26.
- 48 Westerman M, Pizzey A, Hirschman J, et al. Microvesicles in haemoglobinopathies offer insights into mechanisms of hypercoagulability, haemolysis and the effects of therapy. *Br J Haematol* 2008; **142**: 126–35.
- 49 Flint J, Harding RM, Boyce AJ, Clegg JB. The population genetics of the haemoglobinopathies. *Baillieres Clin Haematol* 1998; **11**: 1–51.
- 50 Allison AC. Protection afforded by sickle cell trait against subtertian malarial infection. *BMJ* 1954; **1**: 290–95.
- 51 Cavalli-Sforza LL, Menozzi P, Piazza A. The history and geography of human genes. New Jersey, USA: Princeton University Press, 1994: 1088.
- 52 Modell B, Darlison M. Global epidemiology of haemoglobin disorders and derived service indicators. *Bull World Health Organ* 2008; **86**: 480–87.
- 53 Lysenko AJ, Semashko IN. Geography of malaria. A medico-geographic profile of an ancient disease [in Russian]. In: Lebedev AW, ed. Itogi Nauki: Medicinskaja Geografija. Moscow, Russia: Academy of Science, 1968: 25–146.
- 54 Hay SI, Guerra CA, Tatem AJ, Noor AM, Snow RW. The global distribution and population at risk of malaria: past, present, and future. *Lancet Infect Dis* 2004; **4**: 327–36.
- 55 Williams TN, Mwangi TW, Wambua S, et al. Sickle cell trait and the risk of *Plasmodium falciparum* malaria and other childhood diseases. *J Infect Dis* 2005; **192**: 178–86.



- 56 May J, Evans JA, Timmann C, et al. Hemoglobin variants and disease manifestations in severe falciparum malaria. *JAMA* 2007; **297**: 2220–26.
- 57 Wellem's TE, Hayton K, Fairhurst RM. The impact of malaria parasitism: from corpuscles to communities. *J Clin Invest* 2009; **119**: 2496–505.
- 58 Serjeant GR. Mortality from sickle cell disease in Africa. *BMJ* 2005; **330**: 432–33.
- 59 Makani J, Williams TN, Marsh K. Sickle cell disease in Africa: burden and research priorities. *Ann Trop Med Parasitol* 2007; **101**: 3–14.
- 60 Rahimy MC, Gangbo A, Ahouignan G, et al. Effect of a comprehensive clinical care program on disease course in severely ill children with sickle cell anemia in a sub-Saharan African setting. *Blood* 2003; **102**: 834–38.
- 61 Williams TN, Uyoga S, Macharia A, et al. Bacteraemia in Kenyan children with sickle-cell anaemia: a retrospective cohort and case-control study. *Lancet* 2009; **374**: 1364–70.
- 62 Adamkiewicz TV, Sarnaik S, Buchanan GR, et al. Invasive pneumococcal infections in children with sickle cell disease in the era of penicillin prophylaxis, antibiotic resistance, and 23-valent pneumococcal polysaccharide vaccination. *J Pediatr* 2003; **143**: 438–44.
- 63 Oniyangi O, Omari AA. Malaria chemoprophylaxis in sickle cell disease. *Cochrane Database Syst Rev* 2006; **4**: CD003489.
- 64 Makani J, Komba AN, Cox SE, et al. Malaria in patients with sickle cell anemia: burden, risk factors, and outcome at the outpatient clinic and during hospitalization. *Blood* 2010; **115**: 215–20.
- 65 McAuley CM, Webb C, Makani J, et al. High mortality from *P. falciparum* in children living with sickle cell anemia on the coast of Kenya. *Blood* 2010; **116**: 1663–68.
- 66 Garenne M, Gakusi E. Health transitions in sub-Saharan Africa: overview of mortality trends in children under 5 years old (1950–2000). *Bull World Health Organ* 2006; **84**: 470–78.
- 67 Bain BJ. Neonatal/newborn haemoglobinopathy screening in Europe and Africa. *J Clin Pathol* 2009; **62**: 53–56.
- 68 Platt OS, Thorington BD, Brambilla DJ, et al. Pain in sickle cell disease. Rates and risk factors. *N Engl J Med* 1991; **325**: 11–16.
- 69 Koshy M, Entsuah R, Koranda A, et al. Leg ulcers in patients with sickle cell disease. *Blood* 1989; **74**: 1403–08.
- 70 Gilman JG, Huisman THJ. DNA sequence variation associated with elevated fetal  $\gamma$  globin production. *Blood* 1985; **66**: 1463–65.
- 71 Thein SL, Menzel S, Peng X, et al. Intergenic variants of HBS1L-MYB are responsible for a major quantitative trait locus on chromosome 6q23 influencing fetal hemoglobin levels in adults. *Proc Natl Acad Sci USA* 2007; **104**: 11346–51.
- 72 Menzel S, Garner C, Gut I, et al. A QTL influencing F cell production maps to a gene encoding a zinc-finger protein on chromosome 2p15. *Nat Genet* 2007; **39**: 1197–99.
- 73 Lettre G, Sankaran VG, Bezerra MA, et al. DNA polymorphisms at the BCL11A, HBS1L-MYB and beta-globin loci associate with fetal hemoglobin levels and pain crises in sickle cell disease. *Proc Natl Acad Sci USA* 2008; **105**: 11869–74.
- 74 Higgs DR, Aldridge BE, Lamb J, et al. The interaction of alpha thalassaemia and homozygous sickle-cell disease. *N Engl J Med* 1982; **306**: 1441–46.
- 75 Kar BC, Satapathy RK, Kulozik AE, et al. Sickle cell disease in Orissa State, India. *Lancet* 1986; **2**: 1198–201.
- 76 Padmos MA, Roberts GT, Sackey K, et al. Two different forms of homozygous sickle cell disease occur in Saudi Arabia. *Br J Haematol* 1991; **79**: 93–98.
- 77 Bernaudin F, Verlhac S, Chevret S, et al. G6PD deficiency, absence of alpha-thalassaemia, and hemolytic rate at baseline are significant independent risk factors for abnormally high cerebral velocities in patients with sickle cell anemia. *Blood* 2009; **114**: 742–43.
- 78 Vasavda N, Menzel S, Kondaveeti S, et al. The linear effects of alpha-thalassaemia, the UGT1A1 and HMOX1 polymorphisms on cholelithiasis in sickle cell disease. *Br J Haematol* 2007; **138**: 263–70.
- 79 Nolan VG, Wyszynski DF, Farrer LA, Steinberg MH. Hemolysis-associated priapism in sickle cell disease. *Blood* 2005; **106**: 3264–67.
- 80 Gill FM, Sleeper LA, Weiner SJ, et al. Clinical events in the first decade in a cohort of infants with sickle cell disease. *Blood* 1995; **86**: 776–83.
- 81 Hoppe C, Klitz W, D'Harlingue K, et al. Confirmation of an association between TNF(-308) promoter polymorphism and stroke risk in children with sickle cell anemia. *Stroke* 2007; **38**: 2241–46.
- 82 Hoppe C, Klitz W, Cheng S, et al. Gene interactions and stroke risk in children with sickle cell anemia. *Blood* 2004; **103**: 2391–96.
- 83 Sebastiani P, Ramoni MF, Nolan V, Baldwin CT, Steinberg MH. Genetic dissection and prognostic modeling of overt stroke in sickle cell anemia. *Nat Genet* 2005; **37**: 340–41.
- 84 Steinberg MH, Adewoye AB. Modifier genes and sickle cell anemia. *Curr Opin Hematol* 2006; **13**: 131–36.
- 85 Redwood AM, Williams EM, Desai P, Serjeant, GR. Climate and painful crisis of sickle-cell disease in Jamaica. *BMJ* 1976; **1**: 66–68.
- 86 Jones S, Duncan ER, Thomas N, et al. Windy weather and low humidity are associated with an increased number of hospital admissions for acute pain and sickle cell disease in an urban environment with a maritime temperate climate. *Br J Haematol* 2005; **131**: 530–33.
- 87 Yallop D, Duncan ER, Norris E, et al. The associations between air quality and the number of hospital admissions for acute pain and sickle-cell disease in an urban environment. *Br J Haematol* 2007; **136**: 844–48.
- 88 Mittal H, Roberts L, Fuller GW, et al. The effects of air quality on haematological and clinical parameters in children with sickle cell anaemia. *Ann Hematol* 2009; **88**: 529–33.
- 89 Ryan K, Bain B, Worthington D, et al. Significant haemoglobinopathies: guidelines for screening and diagnosis. *Br J Haematol* 2010; **149**: 35–49.
- 90 Vichinsky V, Hurst D, Earles A, Kleman K, Lubin B. Newborn screening for sickle cell disease: effect on mortality. *Pediatrics* 1988; **81**: 749–55.
- 91 Platt OS, Orkin SH, Dover G, Beardsley GP, Miller B, Nathan DG. Hydroxyurea enhances fetal hemoglobin production in sickle cell anaemia. *J Clin Invest* 1984; **74**: 652–56.
- 92 Cartron J-P, Elion J. Erythroid adhesion molecules in sickle cell disease: effect of hydroxyurea. *Transfus Clin Biol* 2008; **15**: 39–50.
- 93 Lou TF, Singh M, Mackie A, Li W, Pace BS. Hydroxyurea generates nitric oxide in human erythroid cells: mechanisms for gamma-globin gene activation. *Exp Biol Med* 2009; **234**: 1374–82.
- 94 Strouse JJ, Lanzkron S, Beach MC, et al. Hydroxyurea for sickle cell disease: a systematic review for efficacy and toxicity in children. *Pediatrics* 2008; **122**: 1332–42.
- 95 Lankron S, Stouse JJ, Wilson R, et al. Systematic review: hydroxyurea for the treatment of adults with sickle cell disease. *Ann Intern Med* 2008; **48**: 939–55.
- 96 Berthaut I, Guignedoux G, Kirsch-Noir F, et al. Influence of sickle cell disease and treatment with hydroxyurea on sperm parameters and fertility of human males. *Hematologica* 2008; **93**: 988–93.
- 97 Ballas SK, McCarthy WF, Guo N, et al. Exposure to hydroxyurea and pregnancy outcomes in sickle cell anemia. *J Natl Med Assoc* 2009; **101**: 1046–51.
- 98 Steinberg MH, Barton F, Castro O, et al. Effect of hydroxyurea on mortality and morbidity in adult sickle cell anemia: risks and benefits up to 9 years of treatment. *JAMA* 2003; **289**: 1645–51.
- 99 Voskaridou E, Christoulas D, Bilalis A, et al. The effect of prolonged administration of hydroxyurea on morbidity and mortality in adult patients with sickle cell syndromes: results of a 17-year, single-center trial (LaSHS). *Blood* 2010; **115**: 2354–63.
- 100 Zimmerman SA, Schultz WH, Burgett S, Mortier NA, Ware RE. Hydroxyurea therapy lowers transcranial doppler flow velocities in children with sickle cell anemia. *Blood* 2007; **110**: 1043–47.
- 101 Singh SA, Koumbourlis AC, Aygun B. Resolution of chronic hypoxemia in pediatric sickle cell patients after treatment with hydroxyurea. *Pediatr Blood Cancer* 2008; **50**: 1258–60.
- 102 Fitzhugh CD, Wigfall DR, Ware RE. Enalapril and hydroxyurea therapy for children with sickle nephropathy. *Pediatr Blood Cancer* 2005; **45**: 982–85.
- 103 Brawley OW, Cornelius LJ, Edwards LR, et al. National Institutes of Health Consensus Development Conference statement: hydroxyurea treatment for sickle cell disease. *Ann Intern Med* 2008; **148**: 932–38.
- 104 Eckman JR. Techniques for blood administration in sickle cell patients. *Semin Hematol* 2001; **38**: 23–29.
- 105 Vichinsky EP, Earles A, Johnson RA, et al. Alloimmunization in sickle cell anaemia and transfusion of racially unmatched blood. *N Engl J Med* 1990; **322**: 1617–21.



- 106 Wood JC, Tyszka JM, Carson S, Nelson MD, Coates TD. Myocardial iron loading in transfusion-dependent thalassemia and sickle cell disease. *Blood* 2004; **103**: 1934–36.
- 107 Vichinsky E, Onyekwere O, Porter JB, et al. A randomised comparison of deferasirox versus deferoxamine for the treatment of transfusional iron overload in sickle cell disease. *Br J Haematol* 2007; **136**: 501–08.
- 108 Bhatia M, Walters MC. Hematopoietic cell transplantation for thalassaemia and sickle cell disease: past, present and future. *Bone Marrow Transplant* 2008; **41**: 109–17.
- 109 Hsieh MM, Kang EM, Fitzhugh CD, et al. Allogeneic hematopoietic stem-cell transplantation for sickle cell disease. *N Engl J Med* 2009; **361**: 2309–17.
- 110 Pawliuk R, Westerman KA, Fabry ME, et al. Correction of sickle cell disease in transgenic mouse models by gene therapy. *Science* 2001; **294**: 2368–71.
- 111 Persons DA. Hematopoietic stem cell gene transfer for the treatment of hemoglobin disorders. *Hematology Am Soc Hematol Educ Program* 2009; 690–97.
- 112 Hanna J, Wernig M, Markoulaki S, et al. Treatment of sickle cell anemia mouse model with iPS cells generated from autologous skin. *Science* 2007; **318**: 1920–23.
- 113 Field JJ, Macklin EA, Yan Y, Strunk RC, DeBaun MR. Sibling history of asthma is a risk factor for pain in children with sickle cell anemia. *Am J Hematol* 2008; **83**: 855–57.
- 114 Hargrave DR, Wade A, Evans JP, Hewes DK, Kirkham FJ. Nocturnal oxygen saturation and painful sickle cell crises in children. *Blood* 2003; **101**: 846–48.
- 115 Bartolucci P, El Murr T, Roudot-Thoraval F, et al. A randomized, controlled clinical trial of ketoprofen for sickle-cell disease vaso-occlusive crises in adults. *Blood* 2009; **114**: 3742–47.
- 116 Jacobson SJ, Kopecky BA, Joshi P, Babul N. Randomized trial of oral morphine for painful episodes of sickle-cell disease in children. *Lancet* 1997; **350**: 1358–61.
- 117 National Confidential Enquiry into Patient Outcome and Death. A sickle crisis? A report of the National Confidential Enquiry Into Patient Outcome And Death (2008). [http://www.ncepod.org.uk/2008report1/Downloads/Sickle\\_report.pdf](http://www.ncepod.org.uk/2008report1/Downloads/Sickle_report.pdf) (accessed Jan 4, 2010).
- 118 Griffin TC, McIntire D, Buchanan GR. High-dose intravenous methylprednisolone therapy for pain in children and adolescents with sickle cell disease. *N Engl J Med* 1994; **330**: 733–37.
- 119 Orringer EP, Casella JF, Ataga KI, et al. Purified poloxamer 188 for treatment of acute vaso-occlusive crisis of sickle cell disease: a randomized controlled trial. *JAMA* 2001; **286**: 2099–106.
- 120 Weiner DL, Hibberd PL, Betit P, Cooper AB, Botelho CA, Brugnara C. Preliminary assessment of inhaled nitric oxide for acute vaso-occlusive crisis in pediatric patients with sickle cell disease. *JAMA* 2003; **289**: 1136–42.
- 121 Anon. Inhaled nitric oxide for pediatric painful sickle crisis. Aug 27, 2009. <http://clinicaltrials.gov/ct2/show/NCT00142051> (accessed Aug 17, 2010).
- 122 Halasa NB, Shankar SM, Talbot TR, et al. Incidence of invasive pneumococcal disease among individuals with sickle cell disease before and after the introduction of the pneumococcal conjugate vaccine. *Clin Infect Dis* 2007; **44**: 1428–33.
- 123 Deane CR, Goss D, Bartram J, et al. Extracranial internal carotid arterial disease in children with sickle cell anaemia. *Haematologica* 2010; **95**: 1287–92.
- 124 O'Driscoll S, Height SE, Dick MC, Rees DC. Serum lactate dehydrogenase as a biomarker in children with sickle cell disease. *Br J Haematol* 2008; **140**: 206–09.
- 125 Switzer JA, Hess DC, Nichols FT, Adams RJ. Pathophysiology and treatment of stroke in sickle-cell disease: present and future. *Lancet Neurol* 2006; **5**: 501–12.
- 126 Prohovnik I, Hurler-Jensen A, Adams R, De Vivo D, Pavlakis SG. Hemodynamic etiology of elevated flow velocity and stroke in sickle-cell disease. *J Cereb Blood Flow Metab* 2009; **29**: 803–10.
- 127 Fullerton HJ, Adams RJ, Zhao S, Johnston SC. Declining stroke rates in Californian children with sickle cell disease. *Blood* 2004; **104**: 36–339.
- 128 Anon. Stroke With Transfusions Changing to Hydroxyurea (SWITCH). June 25, 2010. <http://clinicaltrials.gov/ct2/show/NCT00122980> (accessed Aug 17, 2010).
- 129 Verduzco LA, Nathan DG. Sickle cell disease and stroke. *Blood* 2009; **114**: 5117–25.
- 130 Smith ER, McClain CD, Heeney M, Scott RM. Pial syngangiosis in patients with moyamoya syndrome and sickle cell anemia: perioperative management and surgical outcome. *Neurosurg Focus* 2009; **26**: 1–8.
- 131 Kwiatkowski JL, Zimmerman RA, Pollock AN, et al. Silent infarcts in young children with sickle cell disease. *Br J Haematol* 2009; **146**: 300–05.
- 132 Anon. Silent cerebral infarct multi-center clinical trial. May 6, 2010. <http://clinicaltrials.gov/ct2/show/NCT00072761> (accessed Aug 17, 2010).
- 133 Hogan AM, Pit-ten Cate IM, Vargha-Khadem F, Prengler M, Kirkham FJ. Physiological correlates of intellectual function in children with sickle cell disease: hypoxaemia, hyperaemia and brain infarction. *Dev Sci* 2006; **9**: 379–87.
- 134 Gladwin MT, Vichinsky E. Pulmonary complications of sickle cell disease. *N Engl J Med* 2008; **359**: 2254–65.
- 135 Vichinsky EP, Neumayr LD, Earles AN, et al. Causes and outcomes of the acute chest syndrome in sickle cell disease. *N Engl J Med* 2000; **342**: 1855–65.
- 136 Bernini JC, Rogers ZR, Sandler ES, Reisch JS, Quinn CT, Buchanan GR. Beneficial effect of intravenous dexamethasone in children with mild to moderately severe acute chest syndrome complicating sickle cell disease. *Blood* 1998; **92**: 3082–89.
- 137 Machado RF, Gladwin MT. Pulmonary Complications of Hematological Disease. In: Murray RJ, Broaddus VC, Martin T, et al. Murray and Nadel's Textbook of Respiratory Medicine, 5th edn. Philadelphia, PA: Elsevier, 2010: 1999–2021.
- 138 Bachir D, Parent F, Hajji L, et al. Prospective multicentric survey on pulmonary hypertension (PH) in adults with sickle cell disease. *Blood* 2009; **114**: 572.
- 139 Machado RF, Martyr S, Kato GJ, et al. Sildenafil therapy in patients with sickle cell disease and pulmonary hypertension. *Br J Haematol* 2005; **130**: 445–53.
- 140 Sachdev V, Machado RF, Shizukuda Y, et al. Diastolic dysfunction is an independent risk factor for death in patients with sickle cell disease. *J Am Coll Cardiol* 2007; **49**: 472–79.
- 141 Mekontso Dessap A, Leon R, Habibi A, et al. Pulmonary hypertension and cor pulmonale during severe acute chest syndrome in sickle cell disease. *Am J Respir Crit Care Med* 2008; **177**: 646–53.
- 142 Scheinman JI. Sickle cell disease and the kidney. *Nat Clin Pract Nephrol* 2009; **5**: 78–88.
- 143 Ware RE, Rees RC, Sarnaik SA, et al. Renal function in infants with sickle cell anemia: baseline data from the BABY HUG trial. *J Pediatr* 2010; **156**: 66–70.
- 144 Neumayr LD, Aguilar C, Earles AN, et al. Physical therapy alone compared with core decompression and physical therapy for femoral head osteonecrosis in sickle cell disease. Results of a multicenter study at a mean of three years after treatment. *J Bone Joint Surg Am* 2006; **88**: 2573–82.
- 145 Hernigou P, Daltro G, Filippini P, Mukasa MM, Manicom O. Percutaneous implantation of autologous bone marrow osteoprogenitor cells as treatment of bone avascular necrosis related to sickle cell disease. *Open Orthop J* 2008; **2**: 62–65.
- 146 Sayag D, Binaghi M, Souied EH, et al. Retinal photocoagulation for proliferative sickle cell retinopathy: a prospective clinical trial with new sea fan classification. *Eur J Ophthalmol* 2008; **18**: 248–54.
- 147 Siqueira RC, Costa RA, Scott IU, Cintra LP, Jorge R. Intravitreal bevacizumab (Avastin) injection associated with regression of retinal neovascularization caused by sickle cell retinopathy. *Acta Ophthalmol Scand* 2006; **84**: 834–35.
- 148 Mekeel KL, Langham MR Jr, Gonzalez-Peralta R, Fujita S, Hemming AW. Liver transplantation in children with sickle-cell disease. *Liver Transpl* 2007; **13**: 505–08.
- 149 Rachid-Filho D, Cavalcanti AG, Favorito LA, Costa WS, Sampaio FJ. Treatment of recurrent priapism in sickle cell anemia with finasteride: a new approach. *Urology* 2009; **74**: 1054–57.
- 150 Hagar W, Vichinsky E. Advances in clinical research in sickle cell disease. *Br J Haematol* 2008; **141**: 346–56.